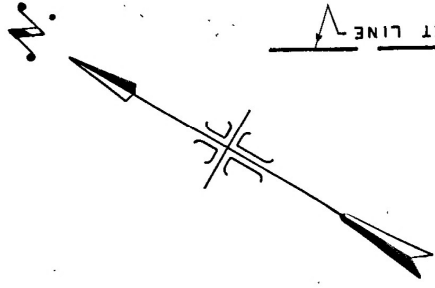


LOT 29

PLAN 339

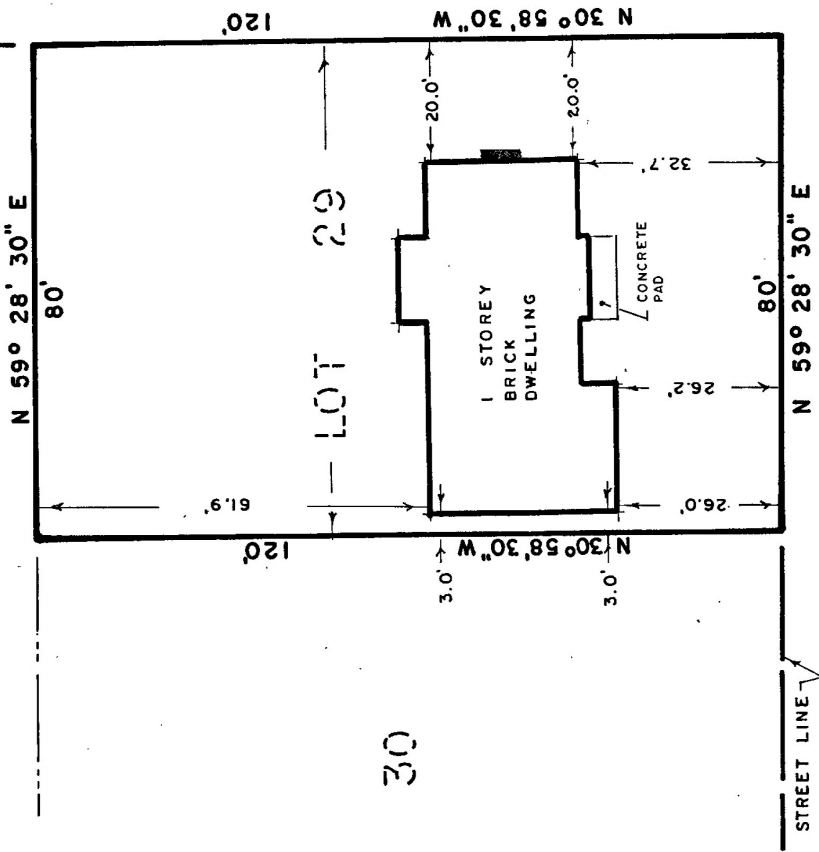
CITY OF CORNWALL

SCALE 1" = 30'



STOKES  
AVE.

28



GRANT AVE.

FROM THE OFFICE OF  
**STIDWILL and SMITH**  
 CIVIL ENGINEERS AND ONTARIO LAND SURVEYORS  
*D. S. Smith*  
 PER

CORNWALL, ONT. SEPTEMBER 6th, 1979.